

PV-WT10

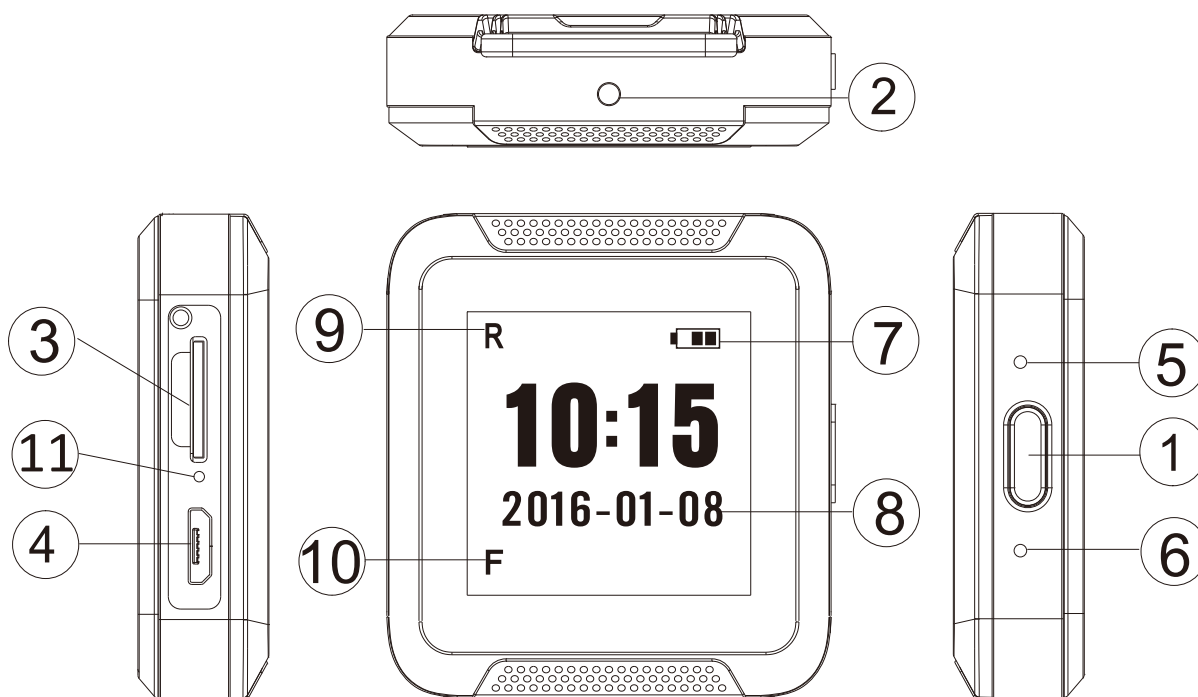
720p Smartwatch DVR



LawMate, innovation never stops

LawMate®

1. Name and Parts



(1) Power on/ off &
Rec on/off button

(2) CMOS lens

(3) Memory card slot

(4) USB port

(5) Reset key

(5) Reset key

(6) Default key / Microphone

(7) Power indication

(8) Time and date display

(9) R = Rec on

(10) F = Storage full

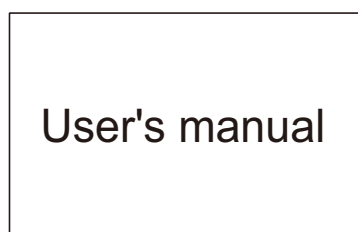
(11) Green LED = Charging

2. Package content

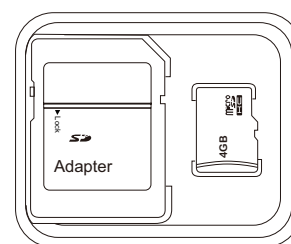
① Smartwatch DVR



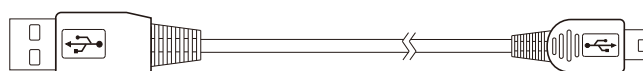
② User manual



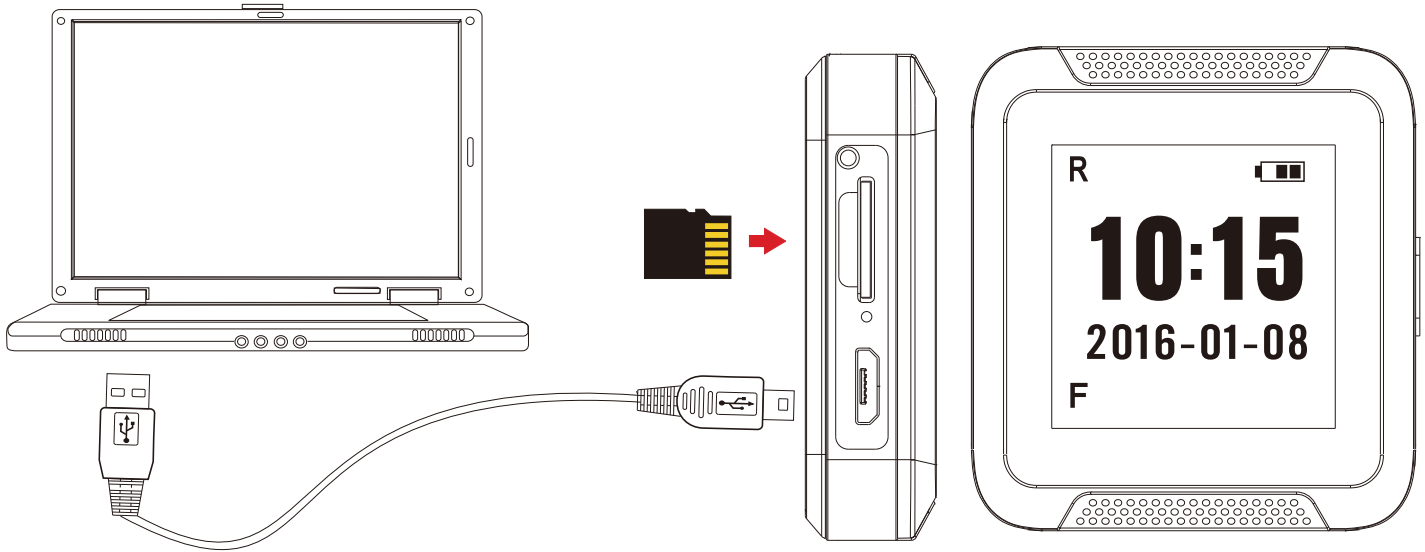
③ Memory card



④ USB cable



3. Charge the battery & Insert memory card



Plug the micro USB end of cable into USB port and plug the other end into the computer or other USB power source. After charging, with golden contact facing up, insert the memory card into the card slot. Then the device will be ready for further operations.

- Solid green LED - the device is charging.
- Green LED goes off - the device is fully charged.

Note: The “F” shows on screen if no memory card is inserted or the card is full.

4. Date & Time setting (for Windows system)

1. From the desk top right-click to open Notepad, create a text (.txt) file named **settime**
2. On the first line of the file, enter date and time information as year.month.day hours.minutes.seconds. For example, suppose the time is October 16th, 2016 15:00. Then, please enter 2016.10.16 15:00:00

Note: There should be a space left between date and hour; time format should be the 24-hour format.

3. Save the file to the root directory of the memory card.

Note: If the setting is completed, the **settime.txt** file will not be visible when you connect the device to the computer again.

5. Format memory card

- (1) Power on the device by pressing ① for 5 seconds.
- (2) Press ⑥ for 3 seconds, and R and F on the screen will start blinking alternately.
- (3) When the LCD turns off, the format is complete.

6. Operation

- Power on: Press ① for 5 seconds, the recording starts automatically when power is on.
- Recording: Press ① to start or stop recording. If the Rec is on, you'll see "R" being displayed on the screen.
- Turn off the screen: With device powered on, the screen turns off automatically after 30 seconds of no operation.
Note: If the recording is on, it continues even the screen is turned off.
- Turn on the screen: Press ① and the screen will be turned on.
- Power off: Press ① for 2 seconds.
- Reset the device: Press ⑤ once, and device will be powered off.

7. Download the video to PC

- (1) Make sure the memory card is inserted into the device.
- (2) Power on the device and connect the device to the PC with the USB cable.
- (3) The card will be recognized as an external drive on the PC.
And you could start to retrieve files from the card.