

EMPlus

for Edic-mini Tiny+ Tiny16+

Operation Manual

Version 2014.02.22

Contents

Purpose	3
Main Features.....	3
Program Start Up.....	4
Interface.....	4
Main Window	4
Type Codes.....	5
Main Menu.....	6
Recorder Settings	11
Files Tab.....	13
Advanced.....	15
Operating the Program.....	17
Connecting to the PC.....	17
Records Playback.....	17
Recorder Memory Formatting	18
Time Synchronization.....	18
Battery Status Display.....	18
Demo Mode	18
Recorder Content Processing	19
Uploading of Records from Recorder to the PC ..	19
Deleting Records in the Recorder Memory.....	20

Purpose

The EMPlus for Edic-mini Tiny+, Tiny16+ (hereinafter referred to as the Program) is an application that works with the Edic-mini Tiny+ and Tiny16+ series.

The program operates under Windows XP (SP3), Windows Vista and Windows 7, 8. For smooth program functionality, hardware configuration of the PC should correspond to the requirements of smooth operation of the user's operational system.

Main Features

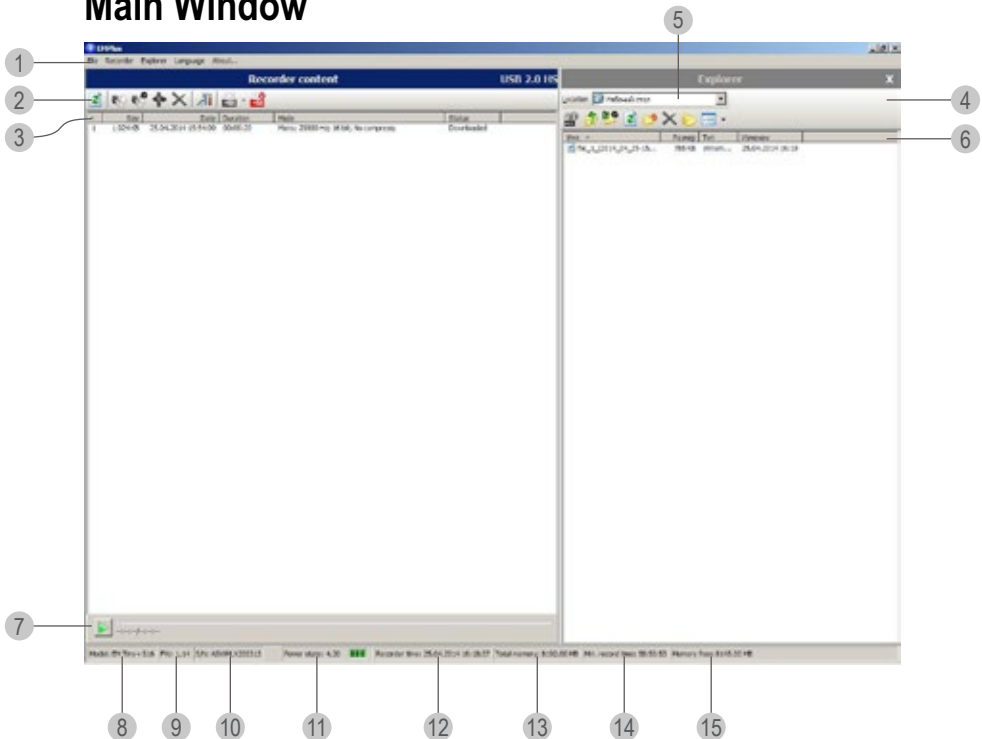
- Reviewing the recorder's content;
- Uploading records from the recorder onto the PC;
- Erasing records from the recorder's memory;
- Uploading records from the PC onto the recorder;
- Record status display (uploaded/not uploaded);
- Digital marking of the records uploaded (available only for records made by this recorder);
- Synchronization of the recorder time with the PC time;
- Battery status display;
- Configuring the recorder;
- Formatting recorder's memory;
- Demo version
- Multilingual support

Program Start Up

Connect USB cable to the recorder, then to the USB port of the PC. The system recognizes a new removable drive. Use it to run the EMPlus.exe file. The Main window of the program opens. There is Recorder's Contents Panel at the left side of the window. There is Explorer Panel at the right side of the window which specifies the location of files on your computer.

Interface

Main Window



Type Codes

1. Main Menu line;
2. Control buttons of the Recorder Content Panel;
3. Record attributes;
4. Control buttons of the Explorer Panel;
5. The location of the uploaded records on the recorder;
6. File attributes (record uploaded from the Recorder onto the PC);
7. Play Button;
8. Recorder's model;
9. Firmware version of the recorder;
10. Recorder's serial number;
11. Recorder's charge indicator and voltage;
12. Recorder's Date and Time;
13. Recorder's total writable memory;
14. Recorder's free writable memory in hours (depending on the recorder's settings);
15. Free memory capacity in Mb.

Main Menu

File

Exit to exit the program.

Recorder

Refresh content forcedly refreshes (newly obtaining from the recorder) settings, lists of records and files stored in the recorder's memory. This process is automatic.

Copy To PC copies the items (records or files) selected in the Recorder Content panel to the current folder of the Explorer panel. While copying records, the resulting names of the files are formed basing on the mask specified by the program settings. While copying files their names stay the same. If there is already a file with the same name in the computer, the program suggests overwriting the file, changing the file name, or canceling the command. This command is available when the Explorer Panel is visible.

Move To PC is similar to Copy to PC, but the selected elements are deleted after copying.

Copy to default folder copies the elements (either records or files) selected in the Recorder Content panel to the default folder specified in the program's parameters. The Explorer panel can be invisible.

Move to default folder is similar to Copy to Default Folder, but the selected elements of the Recorder Panel are deleted after user's confirmation.

Copy Selected Part... allows copying just the selected part of the recording. The selection can be performed in the corresponding dialog window.

Erase Selected Items erases the items (records or files) selected in the Recorder Content panel from the recorder's memory.

Format erases all the items from the recorder's memory.

Synchronize Time sets the current PC time in the recorder.

Apply Password sets password to gain access to the settings

Settings shows a dialog window to view and change both the recorder's and the program's settings. These settings are described in the section Recorder Settings.

Connect attempts to connect to the recorder by means of the current type of connection.

Disconnect disconnects from the recorder. It is recommended, that this command is performed before the recorder is disconnected off the PC.

Connect type sets current type of connection. After any type of connection has been set, connection is carried out automatically.

Explorer

Show wave-file info shows window with the characteristics of the audio file chosen in the Explorer panel along with the information about the file's integrity (if changed after having been uploaded onto the PC)

Go to default folder sets a default folder of the program settings as a current folder of the Explorer panel.

Set current folder as default sets the current folder as a default folder.

New folder creates a new folder in the current folder.

Delete erases items selected in the Explorer panel.

Refresh refreshes the Explorer panel content.

Folders shows/hides the folders' directories.

Explorer window – shows/hides the Explorer panel

Note: Along with above functions of the Explorer panel, the list of folders and files supports a context menu for all the items. Use right mouse button or the correspondent button of the keyboard to call this menu. It is identical to the menu of the Explorer for Windows.

Language allows to select language for the program's interface

About... shows a dialog window with the information about the producer and the program version.

Control buttons of the Recorder Content Panel

(see 2 of the Figure at page 4)

From left to right:

- **Upgrade Recorder Content** backs up the option Upgrade Content of the Recorder Menu;
- **Copy selected elements to PC** backs up the option Copy to the PC of the Recorder Menu
- **Copy selected elements to default folder** backs up Copy to default folder of the Recorder Menu
- **Copy selected part of record** backs up the option Copy selected part... of the Recorder Menu
- **Delete selected elements** backs up the option Delete selected elements of the Recorder Menu
- **Recorder Settings** backs up the option Settings of the Recorder Menu
- **Connect** backs up the option Connect of the Recorder Menu
- **Disconnect** backs up the option Disconnect of the Recorder Menu

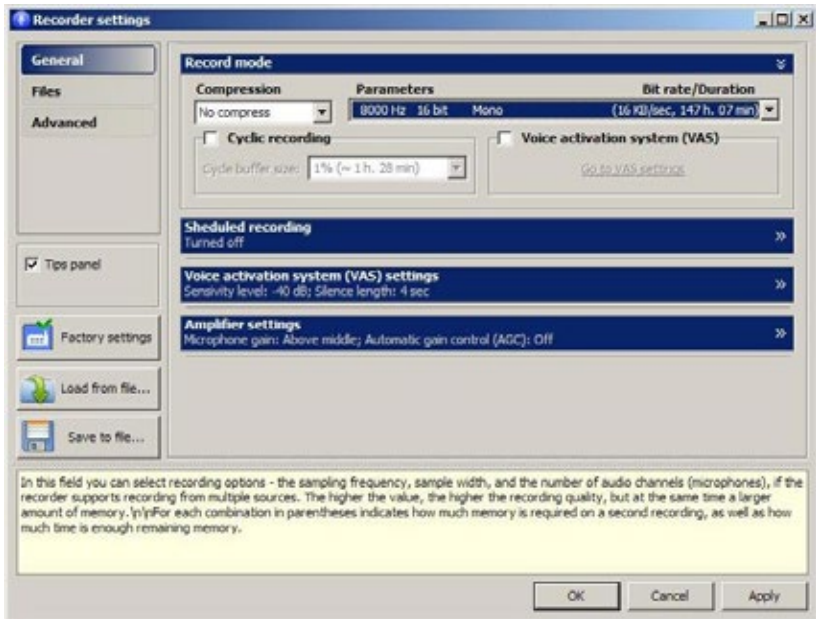
Control buttons of the Explorer Panel

(see 5 of the Figure at page 4)

From left to right:

- **Show Wave-File Info** backs up Show wave-file info of the Explorer Menu
- **Go to higher level** refers to the shift in the folders' structure onto the higher level
- **Go to default folder** backs up the option Go to default folder of the Explorer Menu
- **Upgrade** backs up the option Upgrade of the Explorer Menu
- **Create New Folder** backs up the option “New Folder” of the Explorer Menu
- **Delete selected elements** backs up the option Delete of the Explorer Menu
- **Show/Hide Folder directories** backs up the option Folders of the Explorer Menu
- **Change Display Style** – one of the four available display styles for the Explorer panel can be selected out of the drop-down list:
 - Large icons
 - Small icons
 - List
 - Report

Recorder Settings



General Tab - the tab selects record mode, timers, VAS and in case of Tiny 16+ amplifier's parameters.

Record Mode selects sampling rate.

Scheduled Recording. Once or Daily timer is on.

Once Timer Field (Once Timer Check Box) enables/disables Once Timer. Record Start Time Line sets time and date of the timer's activation. Record End Time Line specifies time and date to stop recording.

Attention! If both timers are active at the same time, their operational time must not coincide or intersect.

Daily Timer Field (Daily Timer Check Box) enables/disables Daily Timer (recording starts and stops every day at the time specified). Record Start Time Line sets time and date of the timer's activation. Record End Time Line specifies time and date to stop recording.

Attention! If both timers are active at the same time, their operational time must not coincide or intersect.

VAS Parameters Field - selects VAS parameters.

Check box «On» - when you select «On», VAS starts operating while recording.

Sensitivity Field

Input signal level is specified above which recording starts.

Duration of Silence Field

Once the input signal drops below the one specified in the field «Level» , recording will continue for the time specified in this field

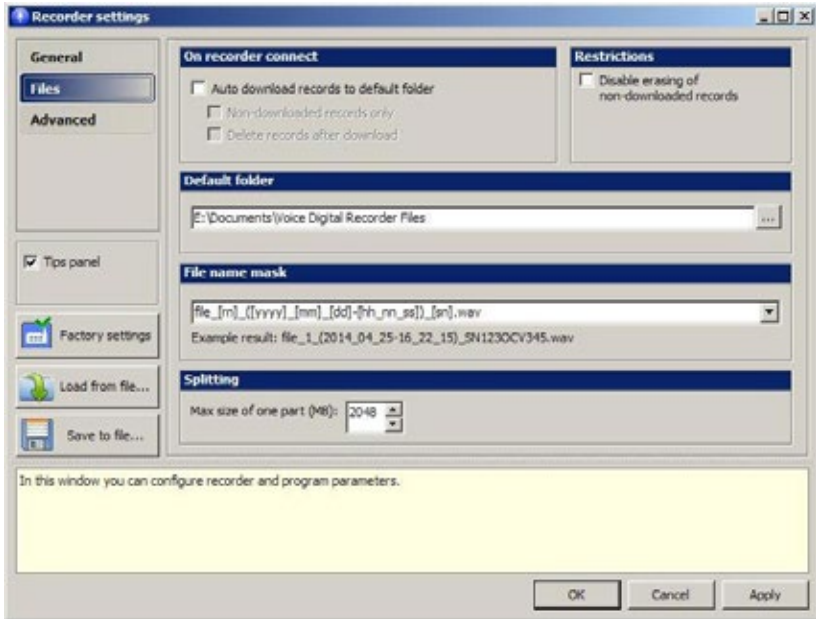
Amplifier Parameters Field selects parameters of microphone's amplifier

Circular recording Field. When selecting a circular recording, you can specify the size of buffer for it stated as a percentage of the total memory of the recorder .

Control buttons:

1. Factory settings .
2. Load from file
3. Save file.

Files Tab



On Recorder Connect (Check box “Download records to default folder”) - With the check box selected when connecting the recorder to the PC, the records are automatically uploaded to default folder specified in the field Default Folder.

There is also the option to set the following parameters (by selecting or deselecting the check box):

Non-uploaded records only - With the check box selected only non-uploaded records are automatically uploaded, without the check box selected all the records from the recorder are uploaded.

Delete records after download – *NOTE! All the records with uploaded status are deleted. There is no ability to restore the deleted records.*

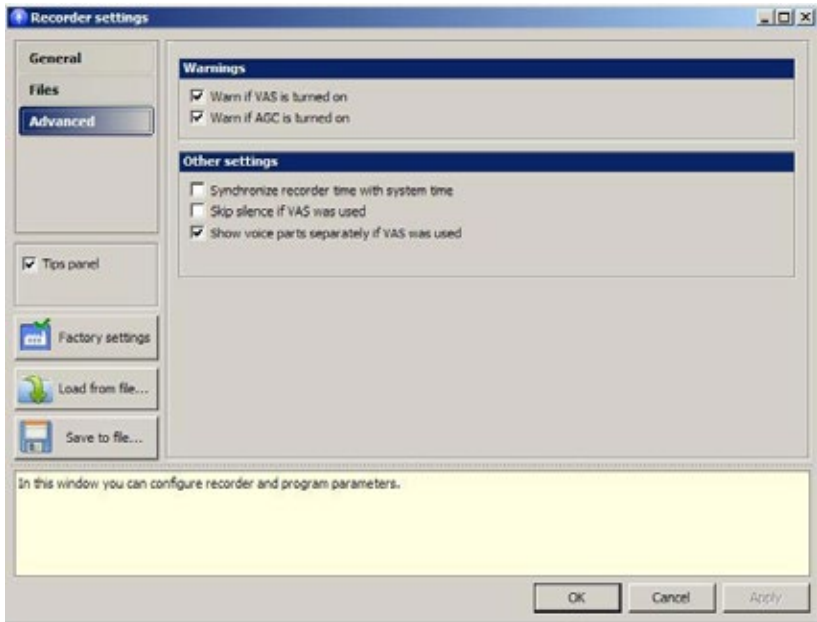
Restrictions Field (Check Box Disable erasing of non-downloaded records) Selection of the check box allows to forbid deletion of non-uploaded records.

Default Folder Field - specifies the folder where the files are uploaded from the recorder by default.

File Name Mask Field - the file name will be stated basing on the mask specified, where **rn** states for the record's number, **yyy** - year, **mm** - month, **dd** - day, **hh** - hours, **mm** - minutes, **ss** - seconds, **sn** - recorder's serial number.

Splitting Field (Check box Split record to several parts while downloading) - with the check box selected the program splits the recording into several files with the size specified in the field Max size of one part (MB).

Advanced



Check Boxes:

Synchronize recorder time with system time - synchronization is available only if the recorder is connected to the PC)

Skip silence if VAS was used - with the check box deselected when uploading record, the part with no recording (silence) will be restored. With the check box selected the record is uploaded onto the PC without any silent parts.

When assessing record duration:

- with the check box selected - silent parts are not included into the total record duration.
- with the check box deselected - silent parts are included into the total record duration.

Show voice parts separately if VAS was used - with the check box selected records, voice parts (the parts where the input signal is above VAS threshold) are displayed separately. Silent parts are not displayed.

Operating the Program

Connecting to the PC

Connect the USB adapter to the recorder, then to the USB port of the PC . The system recognizes a removable media.

It contains the following files:

1. Instructions for EM Tiny +, EMTiny16 +. Pdf.
- 2 . RecManager for Tiny +, Tiny16 +16. Pdf.
- 3 . Short instruction EM Tiny +, EMTiny16 +
- 4 . Rec Manager.exe.

There are also some other files needed for proper operation of the recorder.

The recorder may be configured so that when you connect it to your PC, records from the recorder's memory are automatically unloaded to your PC hard drive .

This adjustment can be performed in the Tab «Files» by means of selecting the desired check boxes in the field «On Recorder Connect»

Records Playback

Select the desired record in the Recorder Content window. Press the Play button at the bottom of the window. Record playback starts.

Recorder Memory Formatting

Attention! When formatting memory, all the records and files will be deleted (in Flash Drive Mode).

To format Recorder memory choose in the Main window Recorder → Format. The window appears to warn that when formatting all data in the Recorder memory will be deleted. Press “Yes”. The window appears to display the formatting process status. When completed the window closes. All the data in the memory are deleted.

Time Synchronization

To synchronize time select Recorder → Synchronize Time

Battery Status Display

There is a power supply indicator at the bottom of the Main window of the program (see position 11 of the Figure, p.3). The figure refers to power voltage, and the indicator from three sections refers to the state of charge. The absence of colored sections means full charge.

Demo Mode

Demo Mode emulates the recorder programmatically, not full-scale, but sufficient enough to study the interface of the RecManager program, its opportunities, as well as to perform simple operations with the recorder content.

Recorder Content Processing

Uploading of Records from Recorder to the PC

The recorder saves records in its internal format. While transferring records to the PC they are re-encoded to a standard WAV format. This procedure is called uploading of record to the PC.

The Attribute Status field displays whether the record has been uploaded to the PC or not. While uploading data to the PC a so called digital signature is created (data concerning the recorder, file integrity, which makes it possible to define whether the file has been changed after being uploaded to the PC).

To upload records to the PC do the following:

1. Select folder for the records uploaded from the recorder using one of the following:
 - 1.1 Select folder in the field “Default folder” of the Tab “Files” in the main window of the program;
 - 1.2 Select folder in the Explorer Panel.
2. Select one or several records in the Recorder Content panel
3. To upload record to the folder specified in paragraph 1.2 select **Recorder** → **Copy to the PC**. After that the record will be uploaded to the folder specified. The record itself will be saved in the recorder’s memory, but the field specifies the status of the record as “Uploaded”.

- **Recorder** → **Move to PC** – the record will also be uploaded to the folder specified, but not saved in the recorder memory
4. To upload record to the default folder (paragraph 1.1) select:
- **Recorder** → **Copy to default folder** – the record will be uploaded to default folder. The record itself will be saved in the recorder’s memory, but the field specifies the status of the record as “Uploaded”.
 - **Recorder** → **Move to default folder** - the record will be uploaded to the default folder, but not saved in the recorder memory.

There is an option to upload only a part of record to the PC. To do this:

1. Select the record a part of which is to be uploaded in the Recorder Content Panel.
2. Select **Recorder** → **Copy selected part**. Specify the boundaries of the record to be uploaded to the PC. Press “OK”. After that the field status reads “Uploaded”.

Deleting Records in the Recorder Memory

To erase file in the recorder memory and displayed in the Recorder Content panel select it and choose “Erase selected elements”.